

LUSU

together we can do



recruitment pack

twenty eleven

What lusu does

We provide a mix of representation, activities and services for our 12,300 student members in Lancaster. We are not for profit, so any money we make through our commercial activity is ploughed straight back into offering our student members more and better services. We look after university societies and sports clubs, volunteering, put on big events like Roses and Grad Ball, run advice and guidance services and off campus accommodation services amongst many other things.

Representation is at the core of what we do. The political leadership of our Union comes from our elected officers, led by the President and team of 5 full time Vice Presidents. As a collegiate university, we have student representation across all nine Colleges as well as an active team of Cross Campus Officers and student reps in every department.

As a Students' Union we are a registered educational charity. We have a Board of Trustees to oversee the key decision making that relates to the future of LUSU. The trustees have a responsibility to ensure that LUSU makes sound financial decisions, works within the law and works for the benefit for its members. We are governed by LUSU Constitution 2011 and Bye Laws, which outline how we operate and what we do.

To find out more about what we have been doing you can read our Trustees' Report for 2009-10.

“we're an incredibly active union”



turnout in our last elections 21%

cross campus/JCR officers 183

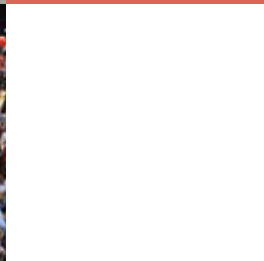
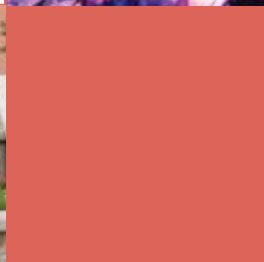
% of our members in a societies 41%

unique members in sports club 1375



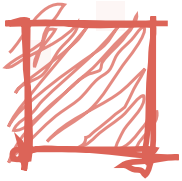
www.lusu.co.uk

“ensuring representation, support, opportunities and services for Lancaster students”



@lancasterSU

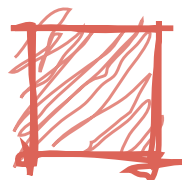
About us



We're transforming our advice and support services. We have recently redefined what information and guidance we intend to offer students. Our newly named Education and Support Unit will:

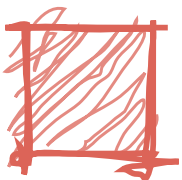
- Continue to provide professional one-to-one advisers work with students to know their options and empower them to solve student life issues (key areas of expertise being academic, accommodation and finance)
- Work closely with officers and staff to help shape University policies and ensure any changes have a positive impact.
- Support 300+ department student reps who we train and support to give grass roots feedback.

Significantly though, we are looking to be more proactive in developing policy on the critical issues and embed support and representation for postgraduates.



Financially LUSU's in a strong position with a turnover of over £7 million. All our commercial areas are profitable. We operate:

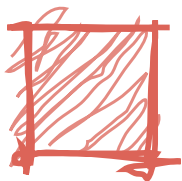
- a campus supermarket (Central)
- a typical student union shop, the LUSU Shop
- LUSU Living an off campus housing operation with over 1000 beds in the city
- the Sugarhouse, our own nightclub situated in the city centre which is the most popular venue in the Lancaster and will see over 100,000 go through its doors in 10/11
- a commercial marketing arm selling promotional opportunities



We're rapidly developing its opportunities to get active and volunteer and participate in extra curricular activities. We have:

- award winning volunteering through LUSU Involve which includes widening participation activity in the region's schools
- international link ups with our students in Goenka, India and Sunway, Malaysia.
- over 150 societies and 30+ sports clubs under our umbrella
- events throughout the year which are run by students for students to show off their skills and talents including our Campus Fest and Roses Tournament

The future employability of our members is also critical. We have a team dedicated to supporting student entrepreneurs and their projects. Through our GreenLancaster initiative, our union ensures it operates in a sustainable way and has won a Gold Sound Impact award.



We know how important it is to have an effective dialogue with our members. We have an in-house communications and IT team and do the majority of our own developments. This includes our main websites, membership systems and publications. Most recently we've been developing 'Pocket' (a mobile site and app) all about services and events for students, in and around Lancaster. In addition, we have a vibrant student media including SCAN (newspaper), Bailrigg FM and LA1 TV. We know that with the increase in fees student expectation will rise. We will need to work harder in this area to make sure our members know the difference we are making for them.

Moving forward

It's an exciting time to be joining LUSU. We've just developed a new Strategic Plan to take us through to 2014, a plan that's flexible enough to allow us to deal with the emergent environment. It is a turbulent time in Higher Education and our University along with every other, will be facing the challenges of rising student expectation without an equivalent rise in income. But, with challenges come opportunities and we know that LUSU has a pivotal role to play in the student experience. We are seeking people who can help us shape and deliver our plans.



working to influence and change



supporting our members to achieve the best degrees they can



adding value to members and their experiences

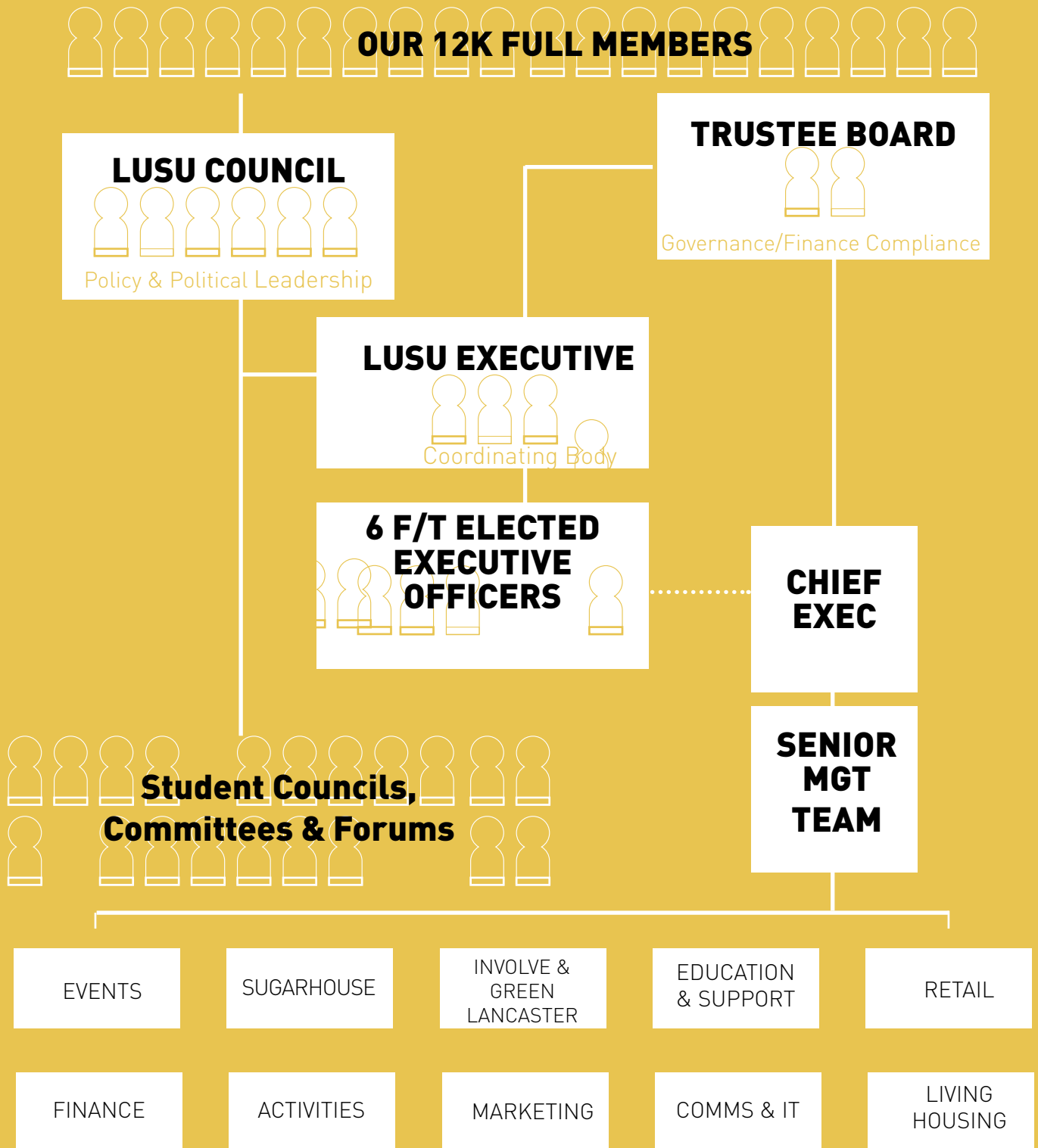


securing spaces for Lancaster's student communities



lusu.co.uk/about/what-were-doing

Our organisation



We have a staffing team of nearly 50 full time members of staff and a further 150 students employed across our services. We actively encourage our staff to continuously professionally develop and have personal development reviews to ensure staff are supported and have opportunities to progress and learn new skills.

What our staff have to say



"I find it really fulfilling working at LUSU because of the people, there's some many people with great ideas wanting to make them happen. I find it infectious and want to be involved with as much as I can"

Martin Ennis, Activities Developer (6yrs service)



"Two words to sum it up; friendly and fun. I have only worked here for 8 months, but everyone was immediately welcoming. There is a real team-feel, from the top management right down to the student staff. Each day is different, one day a group of Santa's might come dashing past, and you're ordering reindeers for the Christmas festival, another day, the sugarhouse squirrels wander on by. As I place to work, I genuinely believe LUSU is the best"

Nicola , Accounts Clerk (1 yrs service)



"Working for LUSU excites me as much now as it did when I started working here 20 yrs ago"

Jo Hardman, Business Development Manager (22yrs service)



"You feel like you are actually helping students. Even small tasks contribute in some way. Working here you feel like part of a big, slightly dysfunctional, but friendly family. Everyday is different. Everyday you walk into the bunker you know that something new will happen"

Jess Horsfield, Student Solutions Team (3yrs service)

There In the University's 2010/11 Wellbeing Survey the majority of our staff team felt that LUSU was a positive place to work. Overwhelming our staff viewed themselves as inspired, excited and contented working for LUSU. We scored very highly for:



positive working relationships

good communication and resources

work life balance

job satisfaction

About our University



Lancaster is a University which is going places. We're in the UK's Top Ten institutions and are currently ranked No.1 in the Northwest through the National Student Survey. Most recently the Complete University Guide ranked us 9th for 2012.

We have 4 main faculties; the Management School, School of Health and Medicine, Faculty of Arts and Social Sciences and Faculty of Science and Technology. The University also delivers degrees in many other places across the globe including India, Pakistan and Malaysia. Plans are now moving forward to develop a campus in China. It's not just the University who has these international links, LUSU have been working alongside.

The University is part of the 1994 Group of Universities which means it is a medium sized institution with a strong reputation for research. It has declared that it will be charging £9k fees in 2012 for UK undergraduate courses.

Student wise, there are 12,377 study at Lancaster. This excludes PGRs writing up. Of these, just over 9000 are undergraduates. Of the postgraduate population, 1200 are research students. The University attracts international students from far and wide with just under 3200 overseas/ eu students currently studying.

The University has an excellent campus with new teaching and learning facilities, sports complex (due to open in July) and residences. It is a green and pleasant place to live and work. £300 million has been invested in the last few years.

lancaster.ac.uk

About Lancaster

Lancaster is a very chilled out place to live. It's a city steeped in history, but with a far more cosmopolitan feel than most places its size. The student population of Lancaster makes it a vibrant city that punches above its weight. The high street hosts all the major coffee shop chains, a Topshop, River Island and a number of designer boutiques. These sit aside the biweekly farmers market and number of family run businesses.

It's a city famous for its real ale and cheese board pubs if you fancy a quite drink. If you are after something more lively, then there are a number of clubs throughout the city including the Students' Union's own Sugarhouse. Culturally there is plenty going on. We have a thriving arts scene with an independent cinema and theatre as well as art galleries and museums.

If you love your live music Lancaster boasts the award winning Get It Loud In Libraries, hosting cutting edge up and comings. Many of the pubs also have live music nights and the Sugarhouse occasionally hosts gigs. If you're after something more familiar, Preston is only a 10 minutes train journey away and regularly gets big names at its academy.

We have great transport links to other parts of the north. If you want a day in the big city both Manchester and Liverpool are just an hour away on train or car. There are also direct trains to London, Glasgow and Edinburgh and all of them are two and a half hour journeys. The trains run till late in all of the cities, so you don't have to worry about leaving too early.

We're also literally on the doorstep of the Lake District and Dales. Tree climbing in Grizedale Forrest and boat trips on Lake Windermere are only an hour away.

House prices and rents are very reasonable comparable to the rest of the UK. Most residents of the city live within walking of the centre and key amenities. Lancaster has a Tesco, Sainsbury's, Asda and Booths all within easy travelling distance and the public transport covers most areas of the city and runs frequently. Buses leave to and from the University to the city every ten minutes during the week.

lancaster.gov.uk

